

# Animal Control Milestones



HABERSHAM COUNTY  
GEORGIA | Est. 1818

HABERSHAM CO. BOARD OF  
COMMISSIONERS

Department of Animal Care  
& Control (HCACC)



DESIGN BUILDER



DESIGN TEAM



Habersham Co. Animal Control Center



Your Pennies At Work

Presented by: Jerry Baggett

# Site

- Remove the employee parking along the back of the building.
- Remove the Coral enclosure and the Driveway around it.
- Reduce the size of the Dog Park by 75% along with the fence area
- Remove the 2nd driveway along the front of the building.
- Remove the Loading Dock.
- Remove the curb & gutter from the main access driveway up to the entrance of the parking lot.
- Remove any grading modifications along the above-mentioned areas.





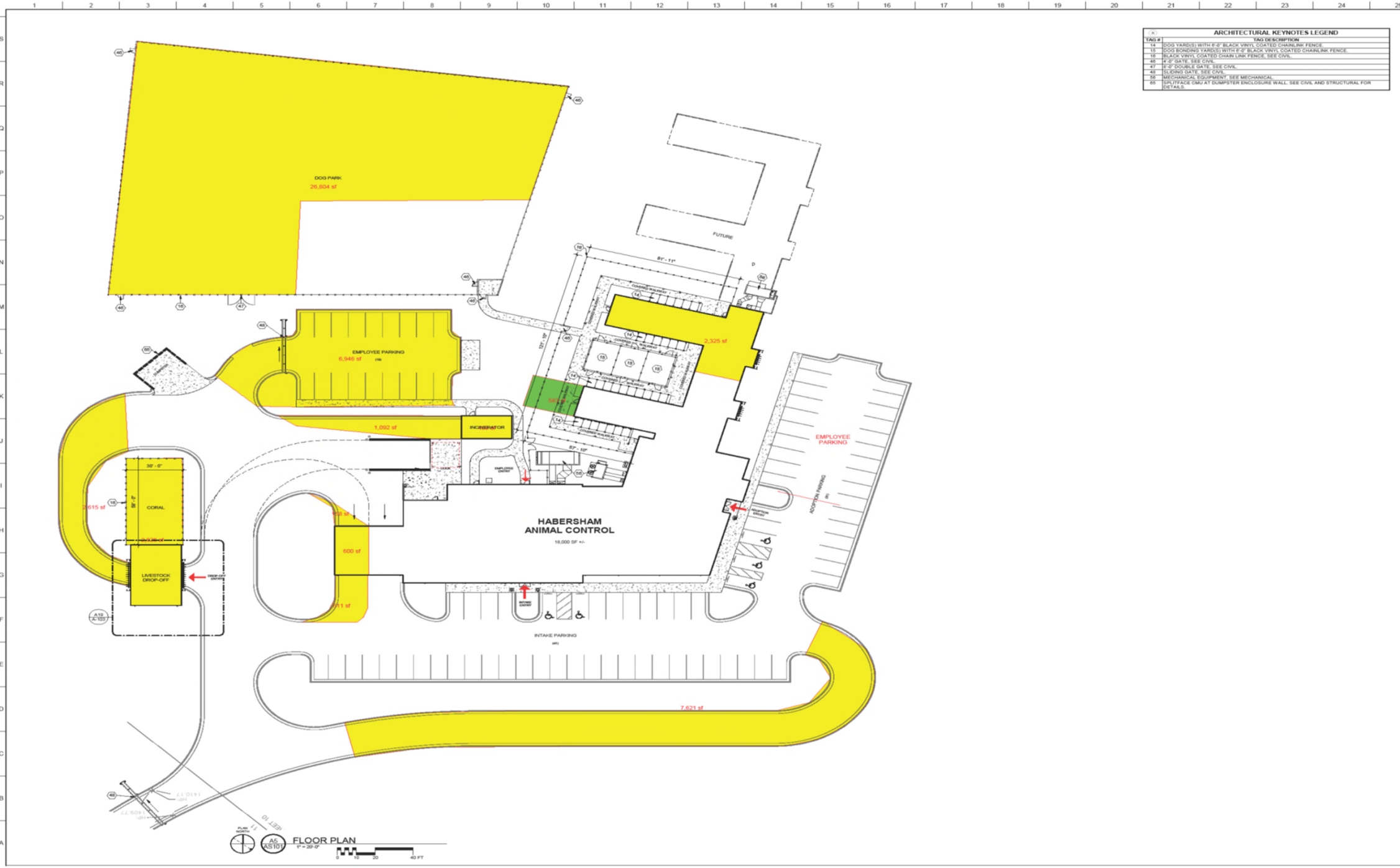
# Building

- Remove the Livestock Building
- Remove the Incinerator structure, including the pad. Provide stub-outs for the future.
- Redesign the building to have a flat roof.
- Redesign the electrical load distribution system to use an existing 250 ekW Generator.



THIS SHEET PLOTS  
ON 42" x 30"

6/10/2024 5:28:21 PM  
© Copyright 2023 by Croft & Associates. All rights reserved. This document is property of Croft & Associates. It is to be used only for the specific project referenced or identified herein and is not to be used on other projects, in whole or in part, except by the express written agreement of Croft & Associates.



ARCHITECTURAL KEYNOTES LEGEND	
TAG #	TAG DESCRIPTION
14	DOG YARDS WITH 6" BLACK VINYL COATED CHAINLINK FENCE
15	DOG BONDING YARDS WITH 6" BLACK VINYL COATED CHAINLINK FENCE
16	BLACK VINYL COATED CHAINLINK FENCE - SEE CIVIL
46	4" GATE - SEE CIVIL
47	8" DOUBLE GATE - SEE CIVIL
48	SLIDING GATE - SEE CIVIL
56	MECHANICAL EQUIPMENT - SEE MECHANICAL
66	SURFACE CMU AT DUMPSTER ENCLOSURE WALL - SEE CIVIL AND STRUCTURAL FOR DETAILS



**CROFT**

Croft & Associates  
3300 Blue Springs Road  
Kennesaw, Georgia 30144  
770.529.7714 (ex)  
www.croftae.com

OWNER  
HABERSHAM COUNTY ANIMAL CONTROL  
130 JACOBS WAY, SUITE 302  
CLARKSVILLE, GA  
30523



HABERSHAM ANIMAL CONTROL  
OLD ATHENS HWY  
CORNELIA, GA  
30531

No.	Date	ISSUANCE
1	2024-07-08	PERMIT SET

PROJECT NUMBER  
**2022-313**

DRAWN: SLA  
CHECKED: OH

SHEET TITLE  
**ARCHITECTURAL SITE PLAN**

SHEET NO.  
**AS101**

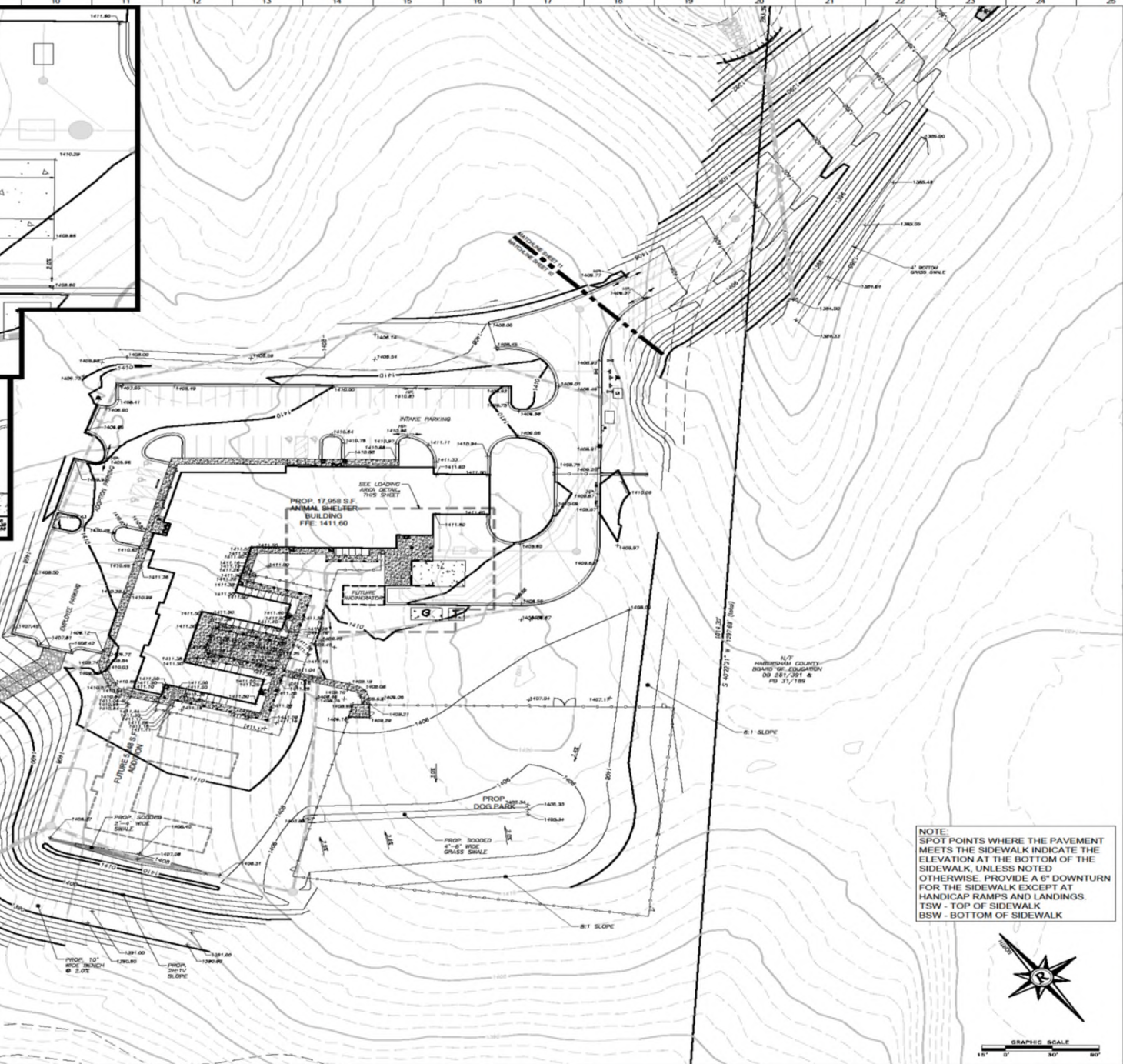
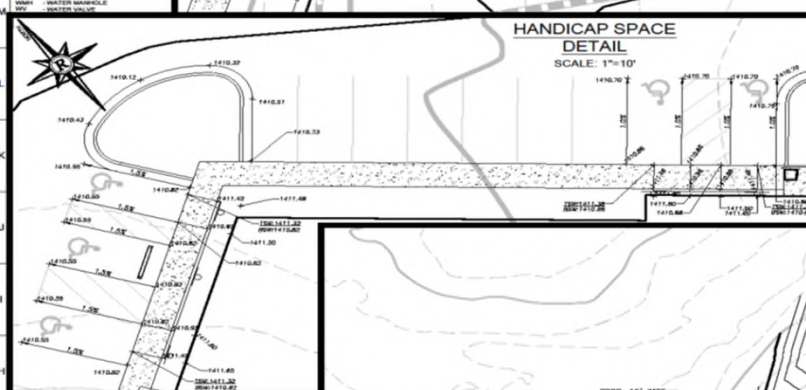
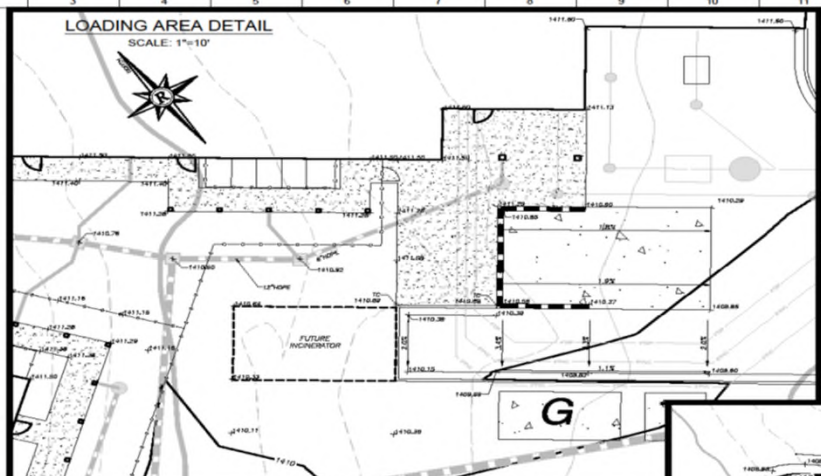






THIS SHEET PLOTS ON 42" x 30"

- LEGEND**
- AVA - ALSO KNOWN AS
  - AC - ALSO KNOWN AS
  - BL - BUILDING FOOTPRINT
  - BS - BUILDING SETBACK LINE
  - CG - CURB & GUTTER
  - CT - CENTER TOP PIPE
  - CL - CENTER LINE
  - CP - CONCRETE PAVEMENT
  - CM - CONCRETE CURB
  - CMF - CONCRETE FOUNDATION
  - CMR - CONCRETE REINFORCING METAL PIPE
  - CO - CLEAN OUT
  - COE - CONCRETE OF ENGINEERS
  - DB - DRAINAGE BASIN
  - DR - DRAINAGE
  - DS - DRAINAGE STRUCTURE
  - DU - DRAINAGE UTILITY
  - EA - EARTH ANCHOR
  - EP - EARTH PILE
  - EPH - EARTH PILE HEAD
  - EPV - EARTH PILE VALVE
  - EPW - EARTH PILE WELDED
  - EPX - EARTH PILE EXTENSION
  - EPY - EARTH PILE YIELD
  - EPZ - EARTH PILE ZONE
  - EP1 - EARTH PILE 1
  - EP2 - EARTH PILE 2
  - EP3 - EARTH PILE 3
  - EP4 - EARTH PILE 4
  - EP5 - EARTH PILE 5
  - EP6 - EARTH PILE 6
  - EP7 - EARTH PILE 7
  - EP8 - EARTH PILE 8
  - EP9 - EARTH PILE 9
  - EP10 - EARTH PILE 10
  - EP11 - EARTH PILE 11
  - EP12 - EARTH PILE 12
  - EP13 - EARTH PILE 13
  - EP14 - EARTH PILE 14
  - EP15 - EARTH PILE 15
  - EP16 - EARTH PILE 16
  - EP17 - EARTH PILE 17
  - EP18 - EARTH PILE 18
  - EP19 - EARTH PILE 19
  - EP20 - EARTH PILE 20
  - EP21 - EARTH PILE 21
  - EP22 - EARTH PILE 22
  - EP23 - EARTH PILE 23
  - EP24 - EARTH PILE 24
  - EP25 - EARTH PILE 25
  - EP26 - EARTH PILE 26
  - EP27 - EARTH PILE 27
  - EP28 - EARTH PILE 28
  - EP29 - EARTH PILE 29
  - EP30 - EARTH PILE 30
  - EP31 - EARTH PILE 31
  - EP32 - EARTH PILE 32
  - EP33 - EARTH PILE 33
  - EP34 - EARTH PILE 34
  - EP35 - EARTH PILE 35
  - EP36 - EARTH PILE 36
  - EP37 - EARTH PILE 37
  - EP38 - EARTH PILE 38
  - EP39 - EARTH PILE 39
  - EP40 - EARTH PILE 40
  - EP41 - EARTH PILE 41
  - EP42 - EARTH PILE 42
  - EP43 - EARTH PILE 43
  - EP44 - EARTH PILE 44
  - EP45 - EARTH PILE 45
  - EP46 - EARTH PILE 46
  - EP47 - EARTH PILE 47
  - EP48 - EARTH PILE 48
  - EP49 - EARTH PILE 49
  - EP50 - EARTH PILE 50
  - EP51 - EARTH PILE 51
  - EP52 - EARTH PILE 52
  - EP53 - EARTH PILE 53
  - EP54 - EARTH PILE 54
  - EP55 - EARTH PILE 55
  - EP56 - EARTH PILE 56
  - EP57 - EARTH PILE 57
  - EP58 - EARTH PILE 58
  - EP59 - EARTH PILE 59
  - EP60 - EARTH PILE 60
  - EP61 - EARTH PILE 61
  - EP62 - EARTH PILE 62
  - EP63 - EARTH PILE 63
  - EP64 - EARTH PILE 64
  - EP65 - EARTH PILE 65
  - EP66 - EARTH PILE 66
  - EP67 - EARTH PILE 67
  - EP68 - EARTH PILE 68
  - EP69 - EARTH PILE 69
  - EP70 - EARTH PILE 70
  - EP71 - EARTH PILE 71
  - EP72 - EARTH PILE 72
  - EP73 - EARTH PILE 73
  - EP74 - EARTH PILE 74
  - EP75 - EARTH PILE 75
  - EP76 - EARTH PILE 76
  - EP77 - EARTH PILE 77
  - EP78 - EARTH PILE 78
  - EP79 - EARTH PILE 79
  - EP80 - EARTH PILE 80
  - EP81 - EARTH PILE 81
  - EP82 - EARTH PILE 82
  - EP83 - EARTH PILE 83
  - EP84 - EARTH PILE 84
  - EP85 - EARTH PILE 85
  - EP86 - EARTH PILE 86
  - EP87 - EARTH PILE 87
  - EP88 - EARTH PILE 88
  - EP89 - EARTH PILE 89
  - EP90 - EARTH PILE 90
  - EP91 - EARTH PILE 91
  - EP92 - EARTH PILE 92
  - EP93 - EARTH PILE 93
  - EP94 - EARTH PILE 94
  - EP95 - EARTH PILE 95
  - EP96 - EARTH PILE 96
  - EP97 - EARTH PILE 97
  - EP98 - EARTH PILE 98
  - EP99 - EARTH PILE 99
  - EP100 - EARTH PILE 100



**NOTE:**  
 SPOT POINTS WHERE THE PAVEMENT MEETS THE SIDEWALK INDICATE THE ELEVATION AT THE BOTTOM OF THE SIDEWALK, UNLESS NOTED OTHERWISE. PROVIDE A 6" DOWNTURN FOR THE SIDEWALK EXCEPT AT HANDICAP RAMPS AND LANDINGS.  
 TSW - TOP OF SIDEWALK  
 BSW - BOTTOM OF SIDEWALK

**CROFT**  
 Croft & Associates  
 1300 Main Springs Road  
 Marietta, Georgia 30144  
 770.528.7714 fax  
 www.croftae.com

**Rochester DCCM**  
 Rochester | DCCM  
 425 Oak Street  
 Marietta, Georgia 30051  
 770.718.0000  
 www.rochester-dccm.com

**Professional Engineer Seal**  
 State of Georgia  
 No. 17,200  
 Date: 01/17/20  
 Name: J. M. Croft, P.E.  
 Title: P.E.

**OWNER:**  
 HABERSHAM COUNTY ANIMAL CONTROL  
 138 JACOBS WAY, SUITE 302  
 CLARKSVILLE, GA 30523



**HABERSHAM ANIMAL CONTROL**  
 OLD ATHENS HWY  
 CORNELIA, GA 30531

No.	Date	Description
1	2022-01-17	REV REVISION 1 SET
2	2024-01-26	REV REVISION 2 SET

**PROJECT NUMBER:** 2022-313  
**DRAWN:** CHE/CKE/DCB  
**CHECKED:** EMC  
**DESIGN TITLE:** GRADING PLAN

**SHEET NO.:** C-10

3/6/2024 1:07:25 PM  
 © Copyright 2022 by Croft & Associates. All rights reserved. This document is property of Croft & Associates. It is to be used only for the specific project referred to in the title block and is not to be used for any other project without the written consent of Croft & Associates.

**GEORGIA811**  
 www.Georgia811.com





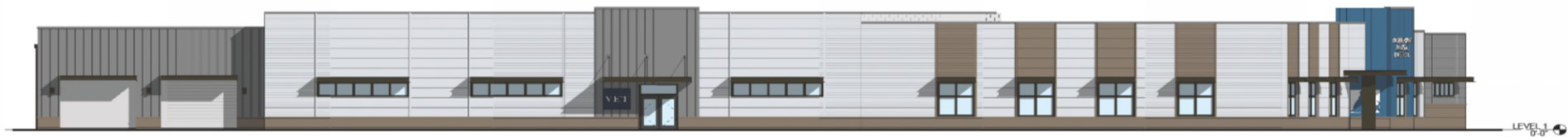
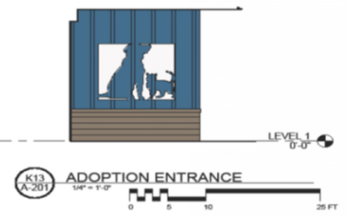
THIS SHEET PLOTS ON 42" x 30"

1/16/2025 8:21:06 AM  
 © Copyright 2025 by Croft & Associates. All rights reserved. This document is property of Croft & Associates. It is to be used only for the specific project reference and is not to be used on other projects, in whole or in part, except by the program written agreement of Croft & Associates.

KEY	DESCRIPTION
21	PREFINISHED 24 GA STANDING SEAM METAL ROOF SYSTEM
22	PREFINISHED ALUMINUM GUTTER & DOWNSPOUTS
25	STONE VENEER SYSTEM STONE PRODUCT BASIS OF DESIGN: ECHELON WATERFORD
26	STONE W/ 5% LARGER STONES MORTAR COLOR BASIS OF DESIGN TO BE COOSA MASONRY CEMENTS, COOSA LIMESTONE BESE
28	CAST STONE SILL
27	FIBER CEMENT BOARD LAP SIDING, PAINT P-16, 8' EXPOSURE
29	FIBER CEMENT BOARD TRIM, PAINT P-11
30	FIBER CEMENT BOARD FASCIA, PAINT P-11
37	WOOD BRACKET 'D', PAINT P-11, SEE SHEET A-303
48	EXTERIOR WALL LIGHT, SEE ELECTRICAL
60	METAL PANEL
61	VENT, PAINT P-11, SEE MECHANICAL



**Croft & Associates**  
 5305 Blue Springs Road  
 Kennesaw, Georgia 30144  
 770.526.7714 (p)  
 www.croftae.com



**OWNER**  
 HABERSHAM COUNTY ANIMAL CONTROL  
 130 JACOBS WAY, SUITE 302  
 CLAMBERVILLE, GA 30523



**HABERSHAM ANIMAL CONTROL**  
 OLD ATHENS HWY  
 CORNELIA, GA 30531

No.	Date	ISSUANCE
1	2024-08-12	PERMIT SET

**PROJECT NUMBER**  
 2022-313  
**DRAWN:** SLA **CHECKED:** OH  
**SHEET TITLE**  
 EXTERIOR ELEVATIONS

**SHEET NO.**  
 A-201

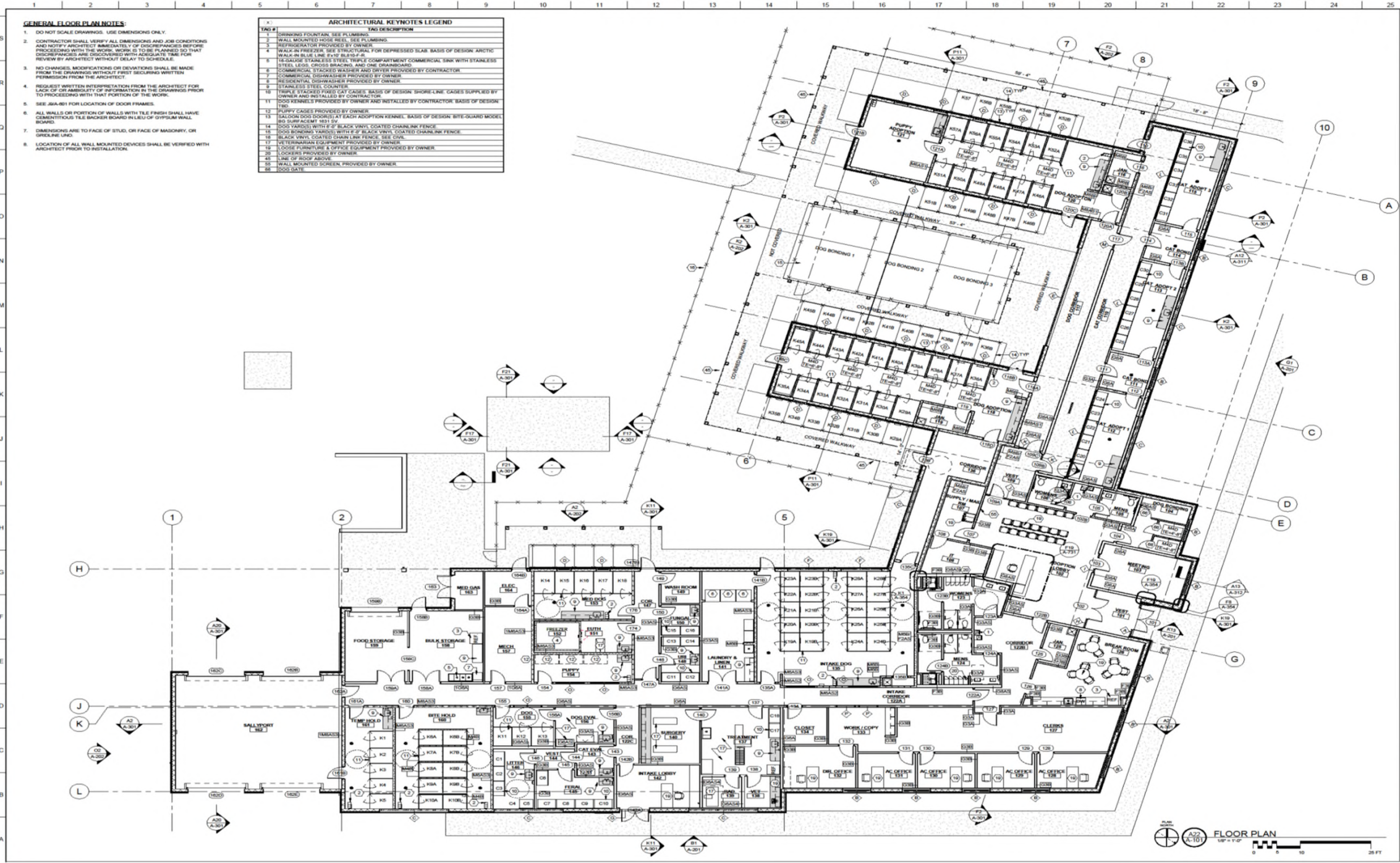


THIS SHEET PLOTS ON 42" x 30"

**GENERAL FLOOR PLAN NOTES:**

- DO NOT SCALE DRAWINGS. USE DIMENSIONS ONLY.
- CONTRACTOR SHALL VERIFY ALL DIMENSIONS AND JOB CONDITIONS AND NOTIFY ARCHITECT IMMEDIATELY OF DISCREPANCIES BEFORE PROCEEDING WITH THE WORK. WORK IS TO BE PLANNED SO THAT DISCREPANCIES ARE DISCOVERED WITH ADEQUATE TIME FOR REVIEW BY ARCHITECT WITHOUT DELAY TO SCHEDULE.
- NO CHANGES, MODIFICATIONS OR DEVIATIONS SHALL BE MADE FROM THE DRAWINGS WITHOUT FIRST SECURING WRITTEN PERMISSION FROM THE ARCHITECT.
- REQUEST WRITTEN INTERPRETATION FROM THE ARCHITECT FOR LACK OF OR AMBIGUITY OF INFORMATION IN THE DRAWINGS PRIOR TO PROCEEDING WITH THAT PORTION OF THE WORK.
- SEE A6A-A01 FOR LOCATION OF DOOR FRAMES.
- ALL WALLS OR PORTION OF WALLS WITH TILE FINISH SHALL HAVE CEMENTITIOUS TILE BACKER BOARD IN LIEU OF GYPSUM WALL BOARD.
- DIMENSIONS ARE TO FACE OF STUD, OR FACE OF MASONRY, OR SPECIFIED USED.
- LOCATION OF ALL WALL MOUNTED DEVICES SHALL BE VERIFIED WITH ARCHITECT PRIOR TO INSTALLATION.

TAG #	TAG DESCRIPTION
1	DRINKING FOUNTAIN. SEE PLUMBING.
2	WALL MOUNTED HOSE REEL. SEE PLUMBING.
3	REFRIGERATOR PROVIDED BY OWNER.
4	WALK-IN FREEZER. SEE STRUCTURAL FOR DERESSED SLAB. BASIS OF DESIGN: ARCTIC WALK-IN BLUE LINE EX-17 BLU-F-A.
5	16-GAUGE STAINLESS STEEL TRIPLE COMPARTMENT COMMERCIAL SINK WITH STAINLESS STEEL LEADS, CROSS BRACINGS, AND ONE DRAINBOARD.
6	COMMERCIAL STACKED WASHER AND DRYER PROVIDED BY CONTRACTOR.
7	COMMERCIAL DISHWASHER PROVIDED BY OWNER.
8	RESIDENTIAL DISHWASHER PROVIDED BY OWNER.
9	STAINLESS STEEL COUNTER.
10	TRIPLE STACKED FIXED CAT CAGES. BASIS OF DESIGN: SHORE-LINE. CAGES SUPPLIED BY OWNER AND INSTALLED BY CONTRACTOR.
11	DOG KENNELS PROVIDED BY OWNER AND INSTALLED BY CONTRACTOR. BASIS OF DESIGN: T80.
12	PUPPY CAGES PROVIDED BY OWNER.
13	BALCON DOOR DOORSET AT EACH ADOPTION KENNEL. BASIS OF DESIGN: BITE-GUARD MODEL 80 SURFACE MOUNT 801 5V.
14	DOG YARDS WITH #2 BLACK VINYL COATED CHAIN LINK FENCE.
15	DOG BONDING YARDS WITH #2 BLACK VINYL COATED CHAIN LINK FENCE.
16	BLACK VINYL COATED CHAIN LINK FENCE. SEE CIVIL.
17	VETERINARIAN EQUIPMENT PROVIDED BY OWNER.
18	LOOSE FURNITURE & OFFICE EQUIPMENT PROVIDED BY OWNER.
19	LOCKERS PROVIDED BY OWNER.
20	LINE OF ROOF ABOVE.
21	WALL MOUNTED SCREEN. PROVIDED BY OWNER.
22	DOG GATE.



1/15/2025 8:20:07 AM  
© Copyright 2025 Croft & Associates. All rights reserved. This document is property of Croft & Associates. It is to be used only for the specific project referred to and is not to be used on any other project without the express written agreement of Croft & Associates.

OWNER:  
HABERSHAM COUNTY ANIMAL CONTROL  
130 JACOBS WAY, SUITE 302  
CLAMBERVILLE, GA 30623



HABERSHAM ANIMAL CONTROL  
OLD ATHENS HWY  
CORNELIA, GA 30531

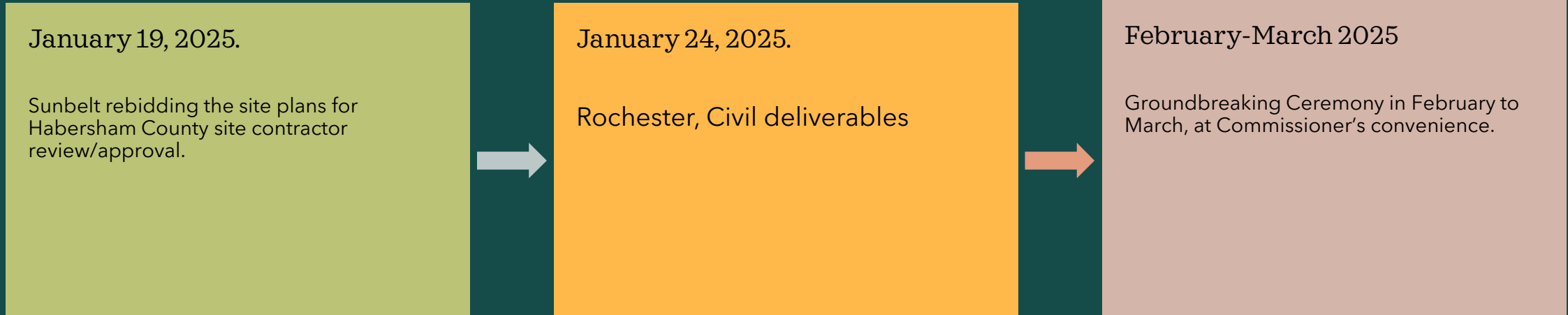
#	DATE	PERMIT SET	DESCRIPTION
1			ISSUANCE

PROJECT NUMBER:  
**2022-313**  
DRAWN: SLA  
CHECKED: CH  
SHEET TITLE:  
**FLOOR PLAN**

SHEET NO:  
**A-101**



# Timeline





# For Coordination

- Schedule Groundbreaking Ceremony date between February and March, at Commissioner's convenience.
- Coordinate with Animal Control and Habersham public to name the main entrance road.
- Coordinate the "by owner" items in project, and self-performed work by Road Department.





# Questions?

Jerry Baggett

